

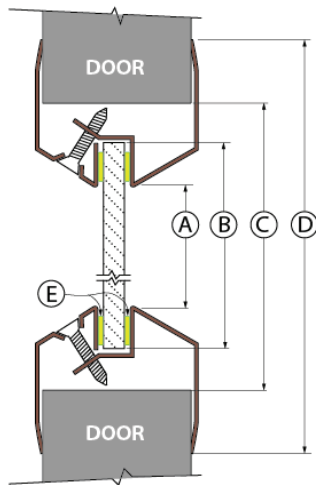
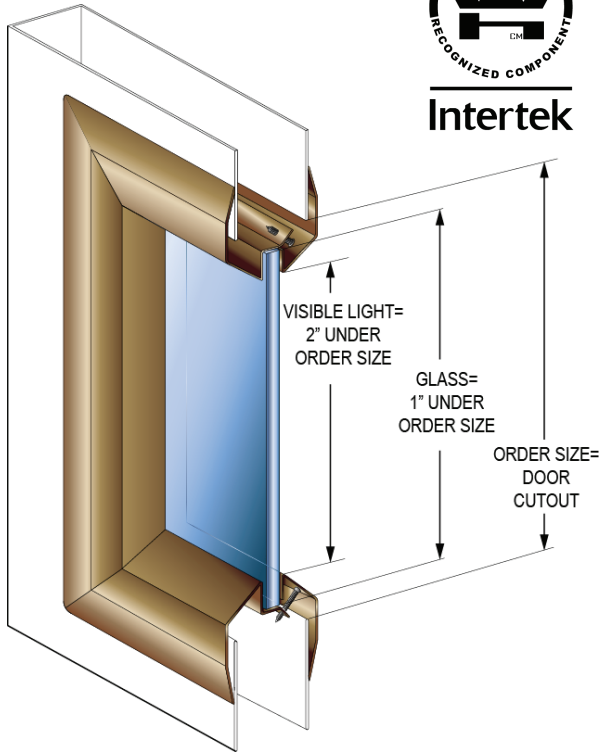
LITES List Prices ...

SVL SERIES, VISION LITE LOW PROFILE

**IN STOCK
FOR IMMEDIATE SHIPPING**



Intertek



- (A) VISIBLE LIGHT = 2" UNDER ORDER SIZE
- (B) GLASS = 1" UNDER ORDER SIZE
- (C) ORDER SIZE = DOOR CUTOUT
- (D) 1-3/8" OVER ORDER SIZE
- (E) GLAZING TAPE

**OTHER FINISHES
AVAILABLE WITH
FACTORY LEAD TIME**

- ▶ 20-180 Minute Fire-Rated Steel Vision Lites for 3/16" to 1/4" Glass
- ▶ Low Profile Beveled Vision Lite for Fire Rated Doors
- ▶ Frame has Single-Sided Fasteners
- ▶ 20 Gauge Cold Rolled Steel
- ▶ Designed for use with 1 3/4" Doors Only
- ▶ Baked on Powder Coat Finish
- ▶ Color: **Standard Bronze and Prime Coat (in selected sizes only)**
- ▶ For other finishes, see color chart on page 15 of the catalog page.
- ▶ Fasteners: # 8 x 7/8" Flathead Phillips Head SMS

ITEM #	SIZE (DOOR CUTOUT)Width x Height	PCS / CTN
SVL520	5" x 20"	6
*SVL535	5" x 35"	6
SVL614	6" x 14"	6
SVL624	6" x 24"	6
SVL626	6" x 26"	6
*SVL627	6" x 27"	6
SVL630	6" x 30"	6
SVL636	6" x 36"	6
SVL672	6" x 72"	1
*SVL722	7" x 22"	6
SVL818	8" x 18"	6
SVL830	8" x 30"	6
*SVL832	8" x 32"	6
SVL836	8" x 36"	6
SVL838	8" x 38"	6
*SVL1212	12" x 12"	10
SVL1818	18" x 18"	2
SVL1830	18" x 30"	2
SVL1832	18" x 32"	2
SVL2236	22" x 36"	2
*SVL2424	24" x 24"	4
*SVL2430	24" x 30"	4
*SVL2432	24" x 32"	4
SVL2434	24" x 34"	2
SVL2436	24" x 36"	2
SVL2454	24" x 54"	1
SVL2456	24" x 56"	1
*SVL2460	24" x 60"	1
*SVL2464	24" x 64"	1
SVL2472	24" x 72"	1
SVL2474	24" x 74"	1
SVL3036	30" x 36"	2

PRICES DO NOT INCLUDE GLASS
Shaded Items are Non-Fire Rated.
 *Available in Prime Coat finish. Suffix "-PR" after part number when ordering.
 Example: To order SVL1212 in Prime Coat finish, use **SVL1212-PR**.

See Lites & Louvers Intertek Certification for information on Fire Ratings.
 Or visit: <http://www.cal-royal.com/pdf/litescertification.pdf>
 See page LL3 for list of custom sizes. See page LL6 for list of LITE KITS (frame, glass & glazing tape combination)



STANDARD & CUSTOM SIZES LITES SVL & VL SERIES

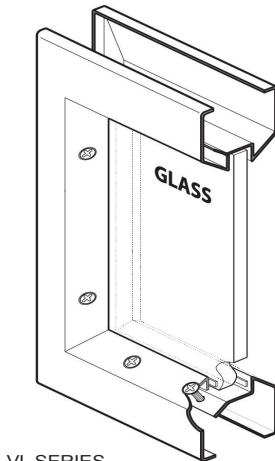
- ◆ Low and Standard Profile Vision Lites for Fire Rated Doors
- ◆ 20 Gauge Cold Rolled Steel
- ◆ For $\frac{3}{16}$ " to $\frac{1}{4}$ " Thick Glass
- ◆ Designed for use with 1 $\frac{3}{4}$ " doors only
- ◆ Frame has Single-Sided Fasteners
- ◆ Fasteners: # 8 x $\frac{7}{8}$ " Flat Head Phillips SMS
- ◆ Baked on Powder Coat finish
- ◆ Color: Standard Bronze and Prime Coat (in selected sizes only)
- ◆ For other finishes, see color chart on page 15 of the catalog page.
- ◆ 20-180 Minute Fire-Rated Steel Vision Lites

**OTHER FINISHES
AVAILABLE WITH
FACTORY LEAD TIME**

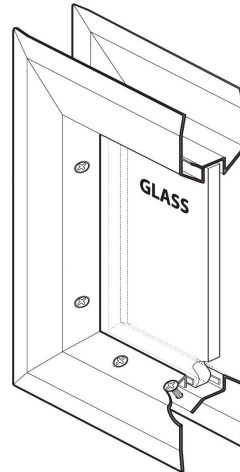
Custom Sizes Width: 5" to 36"

Custom Sizes Height: 4" to 74"

ORDER FORMAT: (Series type - SVL or VL) (cut out width) (cut out height); Example: SVL1832



VL SERIES



SVL SERIES

- All non-stock items are made in the USA with fast lead times.
- All other sizes are available with minimum order requirement and lead time.
- For odd numbered dimension cut outs: Use next larger even size.
- For sizes more than the maximum width and height (36 x 74), call or email customer service.
- Does not include Glass and Glazing Tape.
- Visible light is 2" under the order cut out size.

Galvanneal Sheet for Exterior Applications; Prefix "G"; List x 1.2

***Available in Prime Coat finish. Suffix "-PR" when ordering. Example: SVL1212-PR**